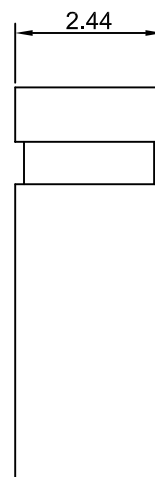
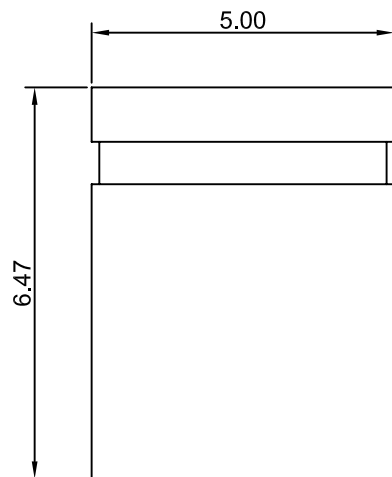


REV.	ECN.	DATE	DWN	APVD



MATERIAL:

INSULATOR : PBT+30% GLASS FILLED (UL 94V-0).

CONTACT : PHOSPHOR BRONZE.

CONTACT FINISH : GOLD OVER NICKEL.

SPECIFICATION:

CURRENT RATING : 3 AMP.

DIELECTRIC WITHSTANDING : AC 650V.

INSULATION RESISTANCE : 1000MΩ MAX.

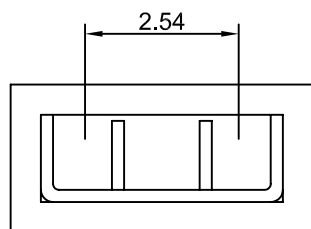
CONTACT RESISTANCE : 30mΩ MAX.

OPERATING TEMPERATURE : -55°C ~ +85°C.

ORDER INFORMATION :

S J B 2 - 0 2 2 A 1 B 0 - R
 1 2 3 4 5 6 7 8 9

- | | |
|--|---|
| 1. SERIES NUMBER: | 6. INSULATOR COLOR: |
| 2. INSULATOR HEIGHT:
2=6.5mm CLOSE | 0=WHITE
1=BLACK
2=BROWN
3=RED
5=YELLOW
6=GREEN
7=BLUE
8=GRAY |
| 3. POSITION:
02=2 PIN | 7. INSULATOR MATERIAL:
B=PBT |
| 4. CONTACT MATERIAL:
2=PHOSPHOR BRONZE | 8. SPECIAL OPTION:
0=NO SPECIAL OPTION |
| 5. CONTACT PLATING:
1=SELECTIVE GOLD FLASH
3=SELECTIVE 10u" GOLD
4=SELECTIVE 15u" GOLD
6=SELECTIVE 30u" GOLD
A=FULL GOLD FLASH
©STANDARD=A | 9. GREEN PRODUCT:
R=RoHS COMPLIANT |



維鼎股份有限公司
 WEKANG CO., LTD.
 TEL:886-2-26436301 FAX:886-2-26432714

GENERAL TOLERANCE
 X.X ± 0.25
 X.XX ± 0.15
 X.XXX ± 0.05
 ANGLE TOLERANCE ± 1°
 RADIUS ± 0.25
 HOLE ± 0.13

DRAWN. TRACY

DATE 08 - 28 - 2006

DRAWING NO. SJB2-022XXB0-R

C14007

CHECKED. HENRY

DATE 08 - 31 - 2006

TITLE. 2.54mm PITCH MINI JUMPER
 H=6.5mm CLOSE

APPROVED. HENRY

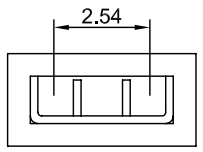
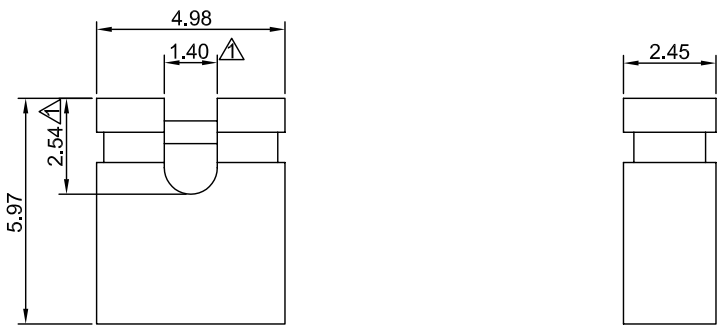
DATE 08 - 31 - 2006

PART NO. SJB2-022XXB0-R

REV A.0

SIZE A4	UNIT mm	SCALE. 8 / 1	SHEET. 1 OF 1	
------------	------------	-----------------	------------------	--

REV.	ECN.	DATE	DWN	APVD
A.1	ECN-070227-01	07/03/06	TRACY	HENRY



MATERIAL:

INSULATOR : PBT+30% GLASS FILLED (UL 94V-0).
 CONTACT : PHOSPHOR BRONZE.
 CONTACT FINISH : GOLD OVER NICKEL.

SPECIFICATION:

CURRENT RATING : 3 AMP.
 DIELECTRIC WITHSTANDING : AC 650V.
 INSULATION RESISTANCE : 1000MΩ MAX.
 CONTACT RESISTANCE : 30mΩ MAX.
 OPERATING TEMPERATURE : -55°C ~ +85°C.

ORDER INFORMATION :

S J B 3 - 0 2 2 A 1 B 0 - R
 1 2 3 4 5 6 7 8 9

- | | |
|------------------------|------------------------|
| 1. SERIES NUMBER: | 6. INSULATOR COLOR: |
| 2. INSULATOR HEIGHT: | 0=WHITE |
| 3=6.0mm OPEN | 1=BLACK |
| 3. POSITION: | 2=BROWN |
| 02=2 PIN | 3=RED |
| 4. CONTACT MATERIAL: | 5=YELLOW |
| 2=PHOSPHOR BRONZE | 6=GREEN |
| 7=BLUE | 8=GRAY |
| 5. CONTACT PLATING: | 7. INSULATOR MATERIAL: |
| 1=SELECTIVE GOLD FLASH | B=PBTP |
| 3=SELECTIVE 10u" GOLD | 8. SPECIAL OPTION: |
| 4=SELECTIVE 15u" GOLD | 0=NO SPECIAL OPTION |
| 6=SELECTIVE 30u" GOLD | 9. GREEN PRODUCT: |
| A=FULL GOLD FLASH | ©STANDARD=A |
| | R=RoHS COMPLIANT |

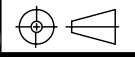
 **WEKANG CO., LTD.**
<http://www.wekang.com>

GENERAL TOLERANCE
 X.X ± 0.25
 X.XX ± 0.15
 X.XXX ± 0.05
 ANGLE TOLERANCE ± 1°
 RADIUS ± 0.25
 HOLE ± 0.13

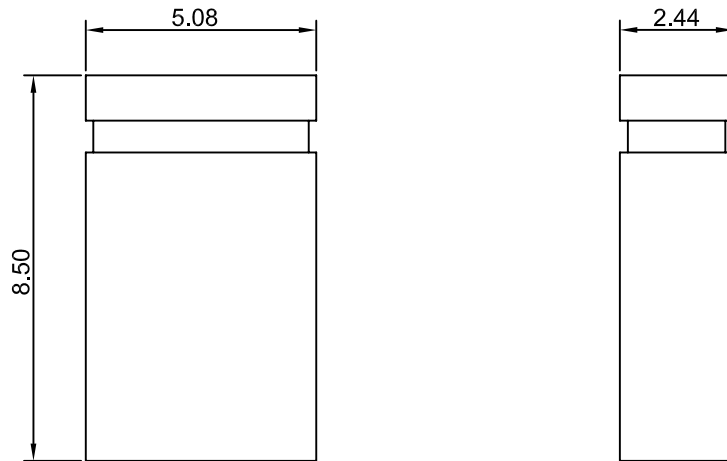
DRAWN.	TRACY	DATE	08 - 24 - 2006
CHECKED.	HENRY	DATE	08 - 29 - 2006
APPROVED.	HENRY	DATE	08 - 29 - 2006

DRAWING NO.	C-SJ0001	CUSTOMER DRAWING
TITLE.	2.54mm PITCH MINI JUMPER H=6.0mm OPEN	
PART NO.	SJB3-022XXB0-R	REV A.1

SIZE	UNIT	SCALE.	SHEET.
A4	mm	5 : 1	1 OF 1



REV.	ECN.	DATE	DWN	APVD



MATERIAL:

INSULATOR : PBT+30% GLASS FILLED (UL 94V-0).
 CONTACT : PHOSPHOR BRONZE.
 CONTACT FINISH : GOLD OVER NICKEL.

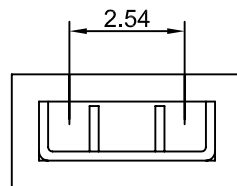
SPECIFICATION:

CURRENT RATING : 3 AMP.
 DIELECTRIC WITHSTANDING : AC 650V.
 INSULATION RESISTANCE : 1000MΩ MAX.
 CONTACT RESISTANCE : 30mΩ MAX.
 OPERATING TEMPERATURE : -55°C ~ +85°C.

ORDER INFORMATION :

S J B 4 - 0 2 2 A 1 B 0 - R
 1 2 3 4 5 6 7 8 9

- | | |
|------------------------|------------------------|
| 1. SERIES NUMBER: | 6. INSULATOR COLOR: |
| 2. INSULATOR HEIGHT: | 0=WHITE |
| 4=8.5mm CLOSE | 1=BLACK |
| 3. POSITION: | 2=BROWN |
| 02=2 PIN | 3=RED |
| 4. CONTACT MATERIAL: | 5=YELLOW |
| 2=PHOSPHOR BRONZE | 6=GREEN |
| 5. CONTACT PLATING: | 7=BLUE |
| 1=SELECTIVE GOLD FLASH | 8=GRAY |
| 3=SELECTIVE 10u" GOLD | 7. INSULATOR MATERIAL: |
| 4=SELECTIVE 15u" GOLD | B=PBT |
| 6=SELECTIVE 30u" GOLD | 8. SPECIAL OPTION: |
| A=FULL GOLD FLASH | 0=NO SPECIAL OPTION |
| ◎STANDARD=A | 9. GREEN PRODUCT: |
| | R=RoHS COMPLIANT |



維鼎股份有限公司
 WEKANG CO., LTD.
 TEL:886-2-26436301 FAX:886-2-26432714

GENERAL TOLERANCE
 X.X ± 0.25
 X.XX ± 0.15
 X.XXX ± 0.05
 ANGLE TOLERANCE ± 1°
 RADIUS ± 0.25
 HOLE ± 0.13

DRAWN. TRACY
 CHECKED. HENRY
 APPROVED. HENRY

DATE 08 - 10 - 2006
 DATE 08 - 22 - 2006
 DATE 08 - 22 - 2006

DRAWING NO. SJB4-022X1B0-R C14007
 TITLE. 2.54mm PITCH MINI JUMPER
 H=8.5mm CLOSE
 PART NO. SJB4-022X1B0-R REV A.0

SIZE A4 UNIT mm SCALE. 6/1 SHEET. 1 OF 1

