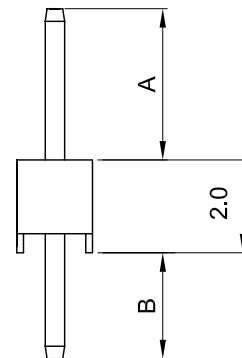
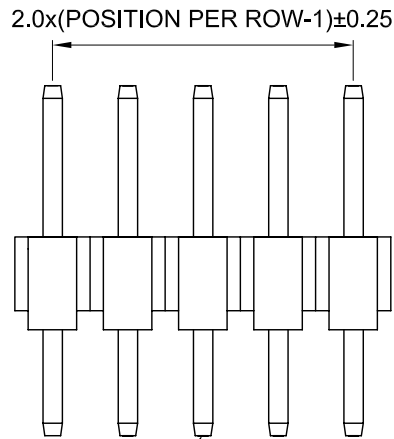
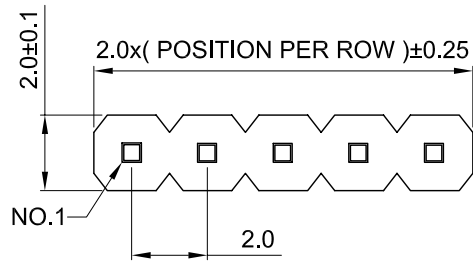


REV.	ECN.	DATE	DWN	APVD



RECOMMENDED P.C.B HOLE LAYOUT

**MATERIAL:**

INSULATOR : PBT (UL-94V-0),BLACK.  
 CONTACT MATERIAL : COPPER ALLOY  
 FINISH : GOLD OVER NICKEL OR TIN PLATED.

**SPECIFICATION:**

CURRENT RATING : 1 AMP.  
 DIELECTRIC WITHSTANDING VOLTAGE : 500V AC FOR ONE MINUTE.  
 INSULATION RESISTANCE : 1000MΩ MIN.  
 OPERATING TEMPERATURE : -55 °C ~ +105 °C.

**ORDER INFORMATION :**

HPD111 1 - XX 1 X B 0 01 - R  
 1 2 3 4 5 6 7 8 9

- |   |   |
|---|---|
| 1. SERIES NUMBER:   | 7. INSULATOR HIGH:<br>0=2.0 mm.   |
| 2. ROW TYPE:<br>1= SINGLE ROW   | 8. PIN TAIL (A/B) LENGTH:<br>01=3.8/3.0<br>A/B :CUSTOM LENGTH AVAILABLE |
| 3. POSITION PER ROW:<br>02~40   | 9. GREEN PRODUT:<br>R=RoHS COMPLIANT                                    |
| 4. CONTACT MATERIAL:<br>1=COPPER ALLOY  |   |
| 5. CONTACT PLATING:<br>1= SELECTIVE GOLD FLASH<br>4= SELECTIVE 15u" GOLD<br>6= SELECTIVE 30u" GOLD<br>A= GOLD FLASH<br>T= TIN |   |
| 6. INSULATOR MATERIAL:<br>B=PBT   |   |

PIN TAIL LENGTH		
GODE	A	B
01	3.8	3.0
02	4.0	2.8

**維鼎股份有限公司**  
**WEKANG CO., LTD.**  
 TEL:886-2-26436301 FAX:886-2-26432714

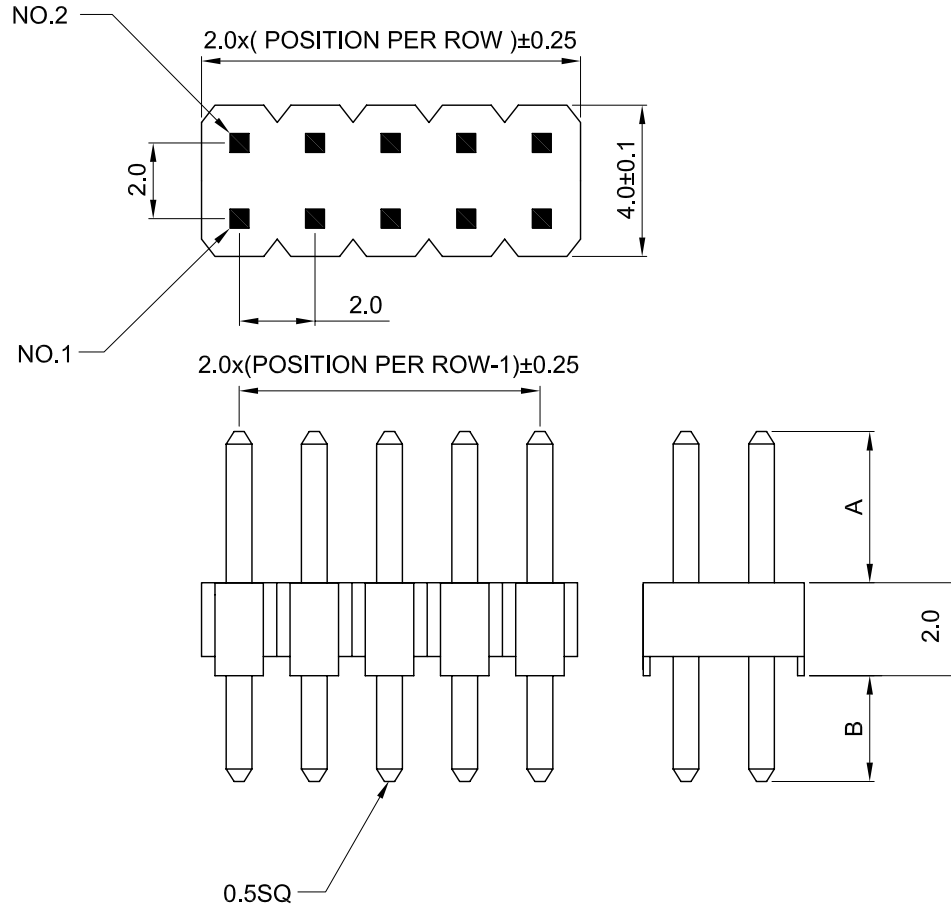
SIZE A4	UNIT mm	SCALE —	SHEET 1 OF 1
------------	------------	------------	-----------------

GENERAL TOLERANCE  
 X.X ± 0.25  
 X.XX ± 0.15  
 X.XXX ± 0.05  
 ANGLE TOLERANCE ± 1°  
 RADIUS ± 0.25  
 HOLE ± 0.13

DRAWN.	TRACY	DATE	07 - 10 - 2006
CHECKED.	HENRY	DATE	07 - 12 - 2006
APPROVED.	HENRY	DATE	07 - 12 - 2006

DRAWING NO.	HPD111-XX1XB001-R	C08001
TITLE.	2.0mm PITCH PIN HEADER, STRAIGHT TYPE	
PART NO.	HPD111-XX1XB001-R	REV A.0

REV.	ECN.	DATE	DWN	APVD



**MATERIAL:**

INSULATOR : PBT (UL-94V-0),BLACK.  
 CONTACT MATERIAL : COPPER ALLOY  
 FINISH : GOLD OVER NICKEL OR TIN PLATED.

**SPECIFICATION:**

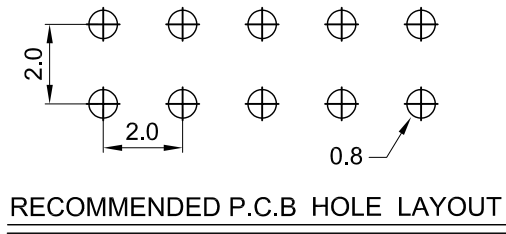
CURRENT RATING : 1 AMP.  
 DIELECTRIC WITHSTANDING VOLTAGE : 500V AC FOR ONE MINUTE.  
 INSULATION RESISTANCE : 1000MΩ MIN.  
 OPERATING TEMPERATURE : -55 °C ~ +105 °C.

**ORDER INFORMATION :**

HPD112 - XX1XB001-R  
 1 2 3 4 5 6 7 8 9

- 1. SERIES NUMBER: 7. INSULATOR HIGH: 0=2.0 mm.
- 2. ROW TYPE: 2=DUAL ROWS 8. PIN TAIL (A/B) LENGTH: 01=3.8/3.0
- 3. POSITION PER ROW: 02~40 9. GREEN PRODUT: R=RoHS COMPLIANT
- 4. CONTACT MATERIAL: 1=COPPER ALLOY
- 5. CONTACT PLATING: 1= SELECTIVE GOLD FLASH 4= SELECTIVE 15u" GOLD 6= SELECTIVE 30u" GOLD A= GOLD FLASH T= TIN
- 6. INSULATOR MATERIAL: B=PBT

PIN TAIL LENGTH		
GODE	A	B
01	3.8	3.0
02	4.0	2.8



**維鼎股份有限公司**  
**WEKANG CO., LTD.**  
 TEL:886-2-26436301 FAX:886-2-26432714

SIZE A4	UNIT mm	SCALE.	SHEET. 1 OF 1
---------	---------	--------	---------------

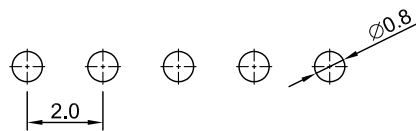
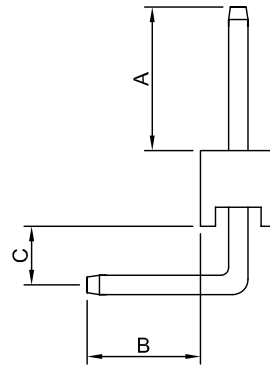
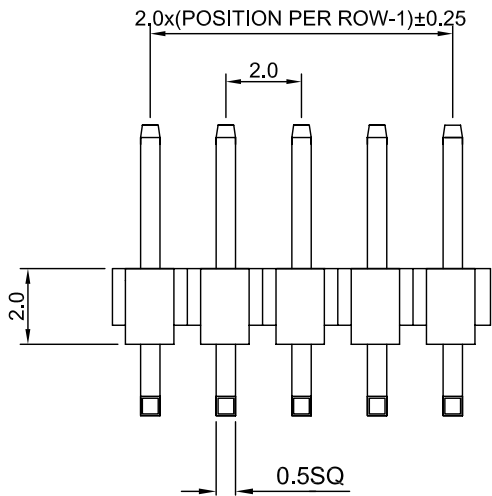
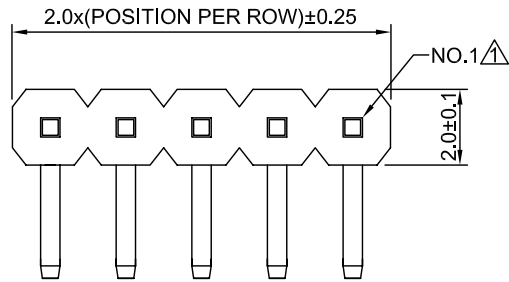
GENERAL TOLERANCE  
 X.X ± 0.25  
 X.XX ± 0.15  
 X.XXX ± 0.05  
 ANGLE TOLERANCE ± 1°  
 RADIUS ± 0.25  
 HOLE ± 0.13

DRAWN. CHUNG  
 CHECKED. HENRY  
 APPROVED. HENRY

DATE 05 - 04 - 2006  
 DATE 06 - 08 - 2006  
 DATE 06 - 08 - 2006

DRAWING NO. HPD112-XX1XB001-R C08001  
 TITLE. 2.0mm PITCH PIN HEADER, STRAIGHT TYPE  
 PART NO. HPD112-XX1XB001-R REV A.0

REV.	ECN.	DATE	DWN	APVD
A.1	ECN-080128-01	03/10/08	TRACY	HENRY



RECOMMENDED P.C.B HOLE LAYOUT ±0.1mm

**MATERIAL:**

INSULATOR : PBT (UL-94V-0),BLACK.  
 CONTACT MATERIAL :COPPER ALLOY  
 FINISH : GOLD OVER NICKEL OR TIN PLATED.

**SPECIFICATION:**

CURRENT RATING : 1 AMP.  
 DIELECTRIC WITHSTANDING VOLTAGE : 500V AC FOR 1 MINUTE.  
 INSULATION RESISTANCE : 1000MΩ MIN.  
 OPERATING TEMPERATURE : -55°C ~ +105°C.

**ORDER INFORMATION :**

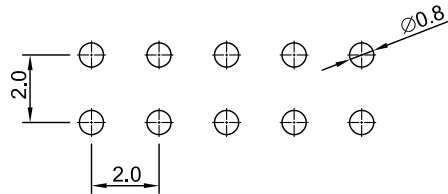
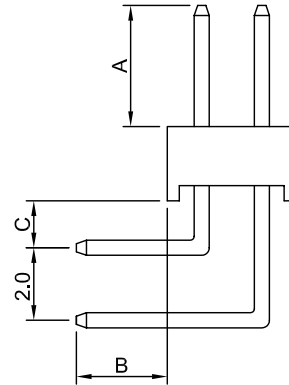
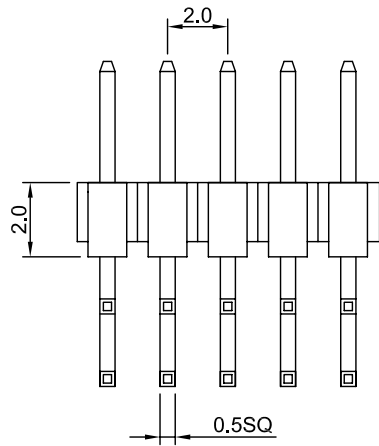
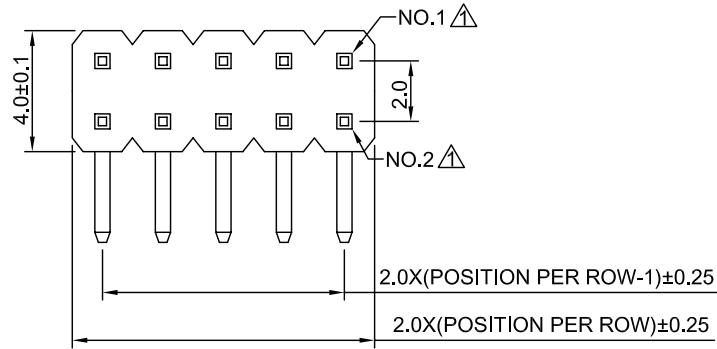
HPD91 1 - 05 1 A B 0 01 - R  
 1 2 3 4 5 6 7 8 9

- |                         |                                |
|-------------------------|--------------------------------|
| 1. SERIES:              | 7. INSULATOR HIGH:             |
| 2. ROW TYPE:            | 0=2.0 mm.                      |
| 1=SINGLE ROW            | 8. PIN TAIL LENGTH:(A/B/C)     |
| 3. POSITION PER ROW:    | 01=3.8/3.0/1.55                |
| 02~40                   | 02=4.0/2.8/1.15                |
| 4. CONTACT MATERIAL:    | A/B/C :CUSTOM LENGTH AVAILABLE |
| 1=COPPER ALLOY          | 9. GREEN PRODUCT:              |
| 5. CONTACT PLATING:     | R=RoHS COMPLIANT               |
| 1= SELECTIVE GOLD FLASH |                                |
| 4= SELECTIVE 15u" GOLD  |                                |
| 6= SELECTIVE 30u" GOLD  |                                |
| A= FULL GOLD FLASH      |                                |
| T= TIN                  |                                |
| 6. INSULATOR MATERIAL:  |                                |
| B=PBT                   |                                |

PIN TAIL LENGTH			
CODE	A	B	C
01	3.8	3.0	1.55
02	4.0	2.8	1.15

<p>WEKANG CO., LTD. http://www.wekang.com</p>	GENERAL TOLERANCE X.X ± 0.25 X.XX ± 0.15 X.XXX ± 0.05 ANGLE TOLERANCE ± 1° RADIUS ± 0.25 HOLE ± 0.13		DRAWN. TRACY DATE 07 - 10 - 2006	DRAWING NO. C-HP0020 CUSTOMER DRAWING
	SIZE A4 UNIT mm SCALE. 5 : 1 SHEET. 1 OF 1		CHECKED. HENRY DATE 07 - 12 - 2006	TITLE. 2.0 mm PITCH PIN HEADER RIGHT ANGLE
			APPROVED. HENRY DATE 07 - 12 - 2006	PART NO. HPD911-XX1XB0XX-R REV A.1

REV.	ECN.	DATE	DWN	APVD
A.1	ECN-080128-01	03/07/08	TRACY	HENRY



RECOMMENDED P.C.B HOLE LAYOUT±0.1mm

**MATERIAL:**

INSULATOR : PBT (UL-94V-0),BLACK.  
 CONTACT MATERIAL :COPPER ALLOY  
 FINISH : GOLD OVER NICKEL OR TIN PLATED.

**SPECIFICATION:**


CURRENT RATING : 1 AMP.  
 DIELECTRIC WITHSTANDING VOLTAGE : 500V AC FOR 1 MINUTE.  
 INSULATION RESISTANCE : 1000MΩ MIN.  
 OPERATING TEMPERATURE : -55 °C ~ +105 °C.

**ORDER INFORMATION :**

HPD912 - 10 1 A B 0 01 - R  
 1 2 3 4 5 6 7 8 9

- |                         |                            |
|-------------------------|----------------------------|
| 1. SERIES:              | 7. INSULATOR HIGH:         |
| 2. ROW TYPE:            | 0=2.0 mm.                  |
| 3. POSITION PER ROW:    | 8. PIN TAIL LENGTH:(A/B/C) |
| 02~40                   | 01=3.8/3.0/1.55            |
| 4. CONTACT MATERIAL:    | 02=4.0/2.8/1.15            |
| 1=COPPER ALLOY          | A/B/C :CUSTOM LENGTH       |
| 5. CONTACT PLATING:     | AVAILABLE                  |
| 1= SELECTIVE GOLD FLASH | 9. GREEN PRODUT:           |
| 4= SELECTIVE 15u" GOLD  | R=RoHS COMPLIANT           |
| 6= SELECTIVE 30u" GOLD  |                            |
| A= FULL GOLD FLASH      |                            |
| T= TIN                  |                            |
| 6. INSULATOR MATERIAL:  |                            |
| B=PBT                   |                            |

PIN TAIL LENGTH			
CODE	A	B	C
01	3.8	3.0	1.55
02	4.0	2.8	1.15

 <b>WEKANG CO., LTD.</b> <a href="http://www.wekang.com">http://www.wekang.com</a>	GENERAL TOLERANCE X.X ± 0.25 X.XX ± 0.15 X.XXX ± 0.05 ANGLE TOLERANCE ± 1° RADIUS ± 0.25 HOLE ± 0.13	DRAWN. TRACY	DATE 06 - 02 - 2006	DRAWING NO. C-HP0018	CUSTOMER DRAWING
		CHECKED. HENRY	DATE 06 - 08 - 2006	TITLE. 2.0 mm PITCH PIN HEADER RIGHT ANGLE	
		APPROVED. HENRY	DATE 06 - 08 - 2006	PART NO. HPD912-XX1XB0XX-R	REV A.1

SIZE A4	UNIT mm	SCALE. 4 : 1	SHEET. 1 OF 1
---------	---------	--------------	---------------