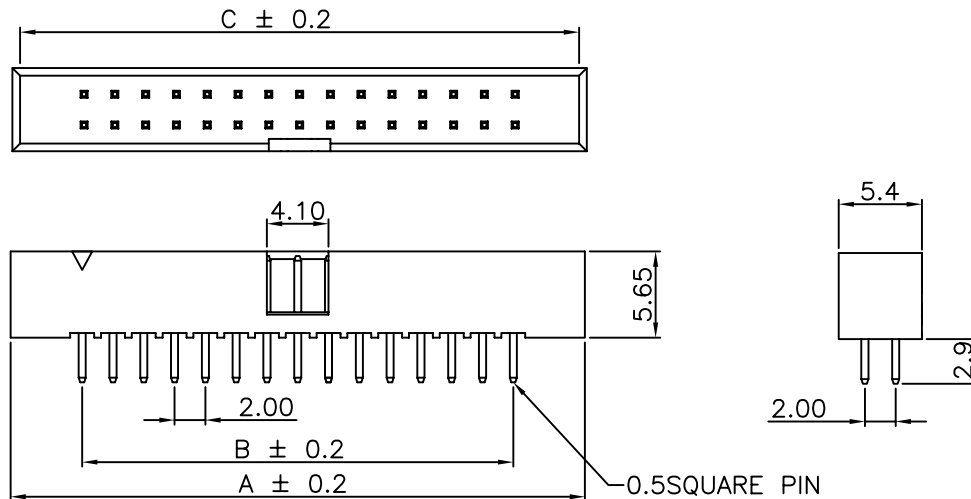


REV.	ECN.	DATE	DWN	APVD



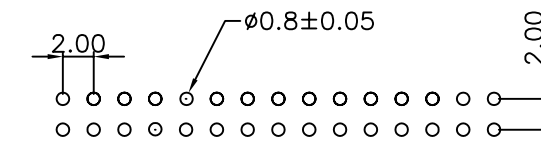
MATERIAL:

INSULATOR : NYLON, UL 94V-0
 CONTACT : COPPER ALLOY
 CONTACT FINISH : GOLD OVER NICKEL

SPECIFICATION:

CURRENT RATING : 1A
 DIELECTRIC WITHSTANDING VOLTAGE : 500V AC
 INSULATION RESISTANCE : 1000MΩ MIN
 CONTACT RESISTANCE : 20mΩ MAX.
 OPERATING TEMPERATURE : -40°C ~ +105°C.

POSITION	A	B	C
04	11.02	2.00	10.00
06	13.07	4.00	12.02
08	15.08	6.00	14.08
10	17.05	8.00	16.08
12	19.03	10.00	18.08
14	21.05	12.00	20.08
20	27.14	18.00	26.15
22	29.30	20.00	28.00
24	31.20	22.00	30.20
26	33.09	24.00	32.16
30	37.20	28.00	36.18
32	39.20	30.00	38.20
36	43.21	34.00	42.22
40	47.26	38.00	46.20
44	51.26	42.00	50.26
50	57.29	48.00	56.25
60	67.50	58.00	66.00
64	71.60	62.00	70.40



RECOMMENDED PCB LAYOUT

ORDER INFORMATION :

H B D 1 1 - 3 0 1 A 1 C 0 0 - R
 1 2 3 4 5 6 7 8

1. SERIES NUMBER	HBD11 : 2.0 mm PITCH BOX HEADER STRAIGHT DIP TYPE
2. POSITION	04 06 08 10 12 14 20 22 24 26 30 32 36 40 44 50 60 64
3. CONTACT MATERIAL	1 : COPPER ALLOY
4. CONTACT PLATING	1 : SELECTIVE GOLD A : FULL GOLD
5. INSULATOR COLOR	1 : BLACK
6. INSULATOR MATERIAL	C : NYLON
7. SPECIAL OPTION	00 : STANDARD TYPE
8. GREEN PRODUCT	R : RoHS COMPLIANT

 維鼎股份有限公司
 WEKANG CO., LTD.
 TEL:886-2-26436301 FAX:886-2-26432714

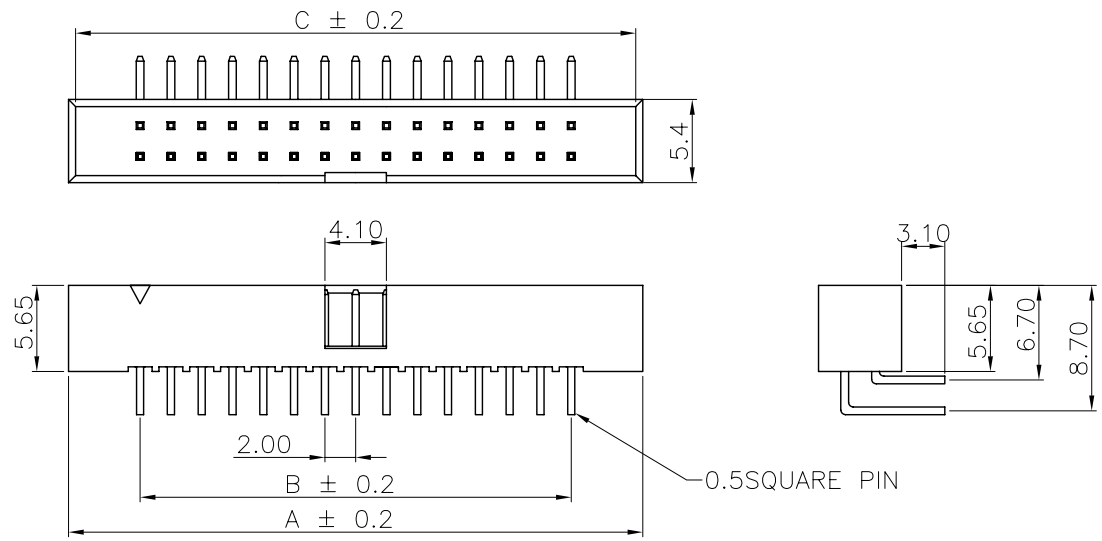
SIZE A4	UNIT mm	SCALE —	SHEET. 1 OF 1	
------------	------------	------------	------------------	---

GENERAL TOLERANCE
 X.X ± 0.25
 X.XX ± 0.15
 X.XXX ± 0.05
 ANGLE TOLERANCE ± 1°
 RADIUS ± 0.25
 HOLE ± 0.13

DRAWN.	JEAN	DATE	11 - 11 - 2005
CHECKED.		DATE	
APPROVED.		DATE	

DRAWING NO.	HBD11-XX1X1C00-R	C08001
TITLE.	2.0 mm PITCH BOX HEADER STRAIGHT DIP TYPE	
PART NO.	HBD11-XX1X1C00-R	REV A.0

REV.	ECN.	DATE	DWN	APVD



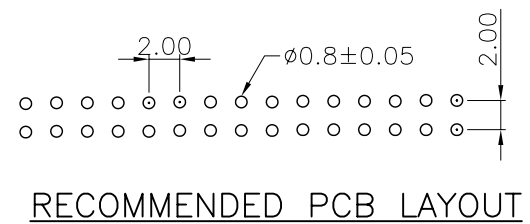
MATERIAL:

INSULATOR : NYLON, UL 94V-0
 CONTACT : COPPER ALLOY
 CONTACT FINISH : GOLD OVER NICKEL

SPECIFICATION:

CURRENT RATING : 1A
 DIELECTRIC WITHSTANDING VOLTAGE : 500V AC
 INSULATION RESISTANCE : 1000MΩ MIN.
 CONTACT RESISTANCE : 20mΩ MAX.
 OPERATING TEMPERATURE : -40°C ~ +105°C.

POSITION	A	B	C
04	11.02	2.00	10.00
06	13.07	4.00	12.02
08	15.08	6.00	14.08
10	17.05	8.00	16.08
12	19.03	10.00	18.08
14	21.05	12.00	20.08
20	27.14	18.00	26.15
24	31.20	22.00	30.20
26	33.09	24.00	32.16
30	37.20	28.00	36.18
32	39.20	30.00	38.20
36	43.21	34.00	42.22
40	47.26	38.00	46.20
44	51.26	42.00	50.26
50	57.29	48.00	56.25
60	67.50	58.00	66.00
64	71.60	62.00	70.40



Order Information :

HBD91 - 3 0 1 A 1 C 0 0 - R
 1 2 3 4 5 6 7 8

1. SERIES NUMBER	HBD91 : 2.0 mm PITCH BOX HEADER RIGHT ANGLE DIP TYPE
2. POSITION	04 06 08 10 12 14 20 24 26 30 32 36 40 44 50 60 64
3. TERMINAL MATERIAL	1 : COPPER ALLOY
4. TERMINAL PLATING	1 : SELECTIVE GOLD A : FULL GOLD
5. INSULATOR COLOR	1 : BLACK
6. INSULATOR MATERIAL	C : NYLON
7. SPECIAL OPTION	00 : STANDARD TYPE
8. GREEN PRODUCT	BLANK : NOT GREEN PRODUCT R : RoHS

WEKANG 維鼎股份有限公司
 WEKANG CO., LTD.
 TEL:886-2-26436301 FAX:886-2-26432714

SIZE A4	UNIT mm	SCALE 2/1	SHEET 1 OF 1
---------	---------	-----------	--------------

GENERAL TOLERANCE
 X.X ± 0.25
 X.XX ± 0.15
 X.XXX ± 0.05
 ANGLE TOLERANCE ± 1°
 RADIUS ± 0.25
 HOLE ± 0.13

DRAWN. JEAN
 CHECKED. HENRY
 APPROVED. HENRY

DATE 11 - 11 - 2005
 DATE 11 - 17 - 2005
 DATE 11 - 17 - 2005

DRAWING NO. HBD91-XX1X1C00-R C08001
 TITLE. 2.0 mm PITCH BOX HEADER
RIGHT ANGLE DIP TYPE
 PART NO. HBD91-XX1X1C00-R REV A.0