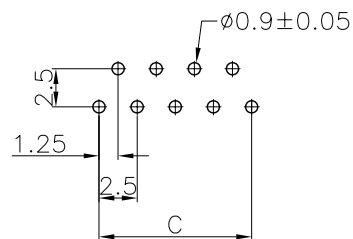
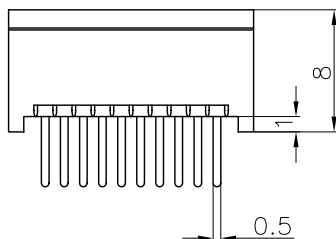
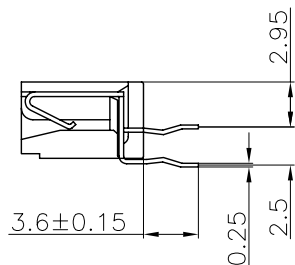
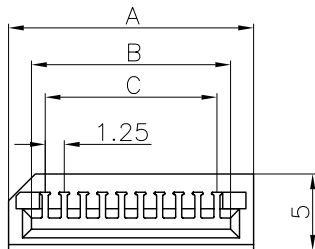
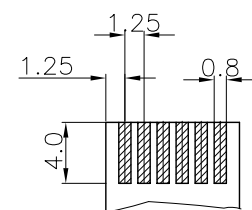


REV.	ECN.	DATE	DWN	APVD



PCB LAYOUT



T=0.3
APPLICABLE FPC/FFC

MATERIAL:

INSULATOR : TERMOPLASTIC, UL94V-0
 CONTACT : PHOSPHOR BRONZE
 CONTACT FINISH : TIN OVER NICKEL PLATED

SPECIFICATION:

CURRENT RATING : 1A
 DIELECTRIC WITHSTANDING VOLTAGE : 500V AC FOR 1 MINUTE
 INSULATION RESISTANCE : 1000MΩ MIN.
 CONTACT RESISTANCE : 30mΩ MAX.
 OPERATING TEMPERATURE : -40°C ~ +105°C.

POSITION	A	B	C	POSITION	A	B	C
4	8.55	6.41	3.75	23	32.30	30.16	27.50
5	9.80	7.66	5.00	24	33.55	31.41	28.75
6	11.05	8.91	6.25	25	34.80	32.66	30.00
7	12.30	10.16	7.50	26	36.05	33.91	31.25
8	13.55	11.41	8.75	27	37.30	35.16	32.50
9	14.80	12.66	10.00	28	38.55	36.41	33.75
10	16.05	13.91	11.25	29	39.80	37.66	35.00
11	17.30	15.16	12.50	30	41.05	38.91	36.25
12	18.55	16.41	13.75	31	42.30	40.16	37.50
13	19.80	17.66	15.00	32	43.55	41.41	38.75
14	21.05	18.91	16.25	33	44.80	42.66	40.00
15	22.30	20.16	17.50	34	46.05	43.91	41.25
16	23.55	21.41	18.75	35	47.30	45.16	42.50
17	24.80	22.66	20.00	36	48.55	46.41	43.75
18	26.05	23.91	21.25	37	49.80	47.66	45.00
19	27.30	25.16	22.50	38	51.05	48.91	46.25
20	28.55	26.41	23.75	39	52.30	50.16	47.50
21	29.80	27.66	25.00	40	53.55	51.41	48.75
22	31.05	28.91	26.25				

Order Information :

EFH 11 - 1 0 2 T 1 B 0 1 - R
 1 2 3 4 5 6 7 8

1. SERIES NUMBER	EFH11 : 1.25mm PITCH FPC CONN. STRAIGHT, NON ZIF TYPE(LIF) SINGLE BEAM CONTACT
2. POSITION	04 ~ 40
3. CONTACT TYPE	2 : PHOSPHOR BRONZE
4. CONTACT PLATING	T : TIN
5. INSULATOR COLOR	1 : BLACK
6. INSULATOR MATERIAL	B : PBT C : NYLON © STANDARD=B
7. PACKING	1 : TUBE
8. GREEN PRODUCT	BLANK : NOT GREEN PRODUCT R : RoHS COMPLIANT

WEKANG CO., LTD.
 維鼎股份有限公司
 TEL:886-2-26436301 FAX:886-2-26432714

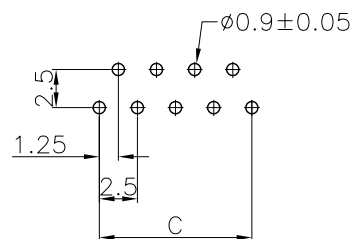
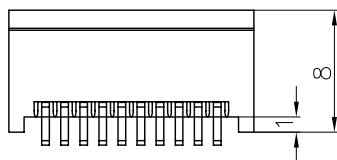
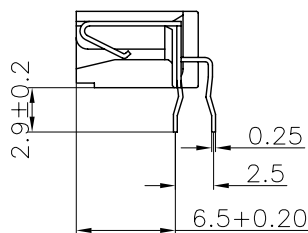
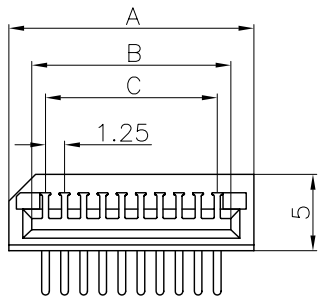
SIZE A4	UNIT mm	SCALE 2/1	SHEET 1 OF 1	
---------	---------	-----------	--------------	--

GENERAL TOLERANCE
 X.X ±0.25
 X.XX ±0.15
 X.XXX ±0.05
 ANGLE TOLERANCE ±1°
 RADIUS ±0.25
 HOLE ±0.13

DRAWN.	JEAN	DATE	02 - 23 - 2006
CHECKED.	HENRY	DATE	02 - 27 - 2006
APPROVED.	HENRY	DATE	02 - 27 - 2006

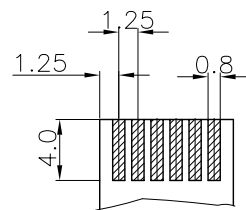
DRAWING NO.	EFH11-XX2T1X01-R	C10021
TITLE	1.25mm PITCH FPC CONN. STRAIGHT NON ZIF TYPE(LIF) SINGLE BEAM CONTACT	
PART NO.	EFH11-XX2T1X01-R	REV A.0

REV.	ECN.	DATE	DWN	APVD



PCB LAYOUT

POSITION	A	B	C	POSITION	A	B	C
4	8.55	6.41	3.75	23	32.30	30.16	27.50
5	9.80	7.66	5.00	24	33.55	31.41	28.75
6	11.05	8.91	6.25	25	34.80	32.66	30.00
7	12.30	10.16	7.50	26	36.05	33.91	31.25
8	13.55	11.41	8.75	27	37.30	35.16	32.50
9	14.80	12.66	10.00	28	38.55	36.41	33.75
10	16.05	13.91	11.25	29	39.80	37.66	35.00
11	17.30	15.16	12.50	30	41.05	38.91	36.25
12	18.55	16.41	13.75	31	42.30	40.16	37.50
13	19.80	17.66	15.00	32	43.55	41.41	38.75
14	21.05	18.91	16.25	33	44.80	42.66	40.00
15	22.30	20.16	17.50	34	46.05	43.91	41.25
16	23.55	21.41	18.75	35	47.30	45.16	42.50
17	24.80	22.66	20.00	36	48.55	46.41	43.75
18	26.05	23.91	21.25	37	49.80	47.66	45.00
19	27.30	25.16	22.50	38	51.05	48.91	46.25
20	28.55	26.41	23.75	39	52.30	50.16	47.50
21	29.80	27.66	25.00	40	53.55	51.41	48.75
22	31.05	28.91	26.25				



T=0.3
APPLICABLE FPC/FFC

MATERIAL:

INSULATOR : TERMOPLASTIC, UL94V-0
CONTACT : PHOSPHOR BRONZE
CONTACT FINISH : TIN OVER NICKEL PLATED

SPECIFICATION:

CURRENT RATING : 1A
DIELECTRIC WITHSTANDING VOLTAGE : 500V AC FOR 1 MINUTE
INSULATION RESISTANCE : 1000MΩ MIN.
CONTACT RESISTANCE : 30mΩ MAX.
OPERATING TEMPERATURE : -40°C ~ +105°C.

Order Information :

EFH 91 - 1 0 2 T 1 B 0 1 - R
1 2 3 4 5 6 7 8 9

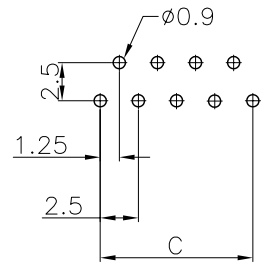
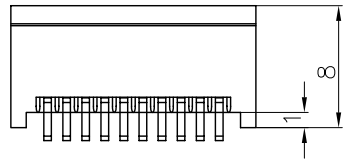
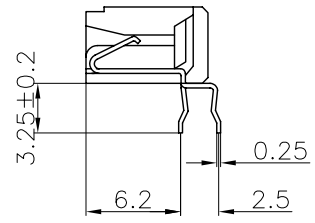
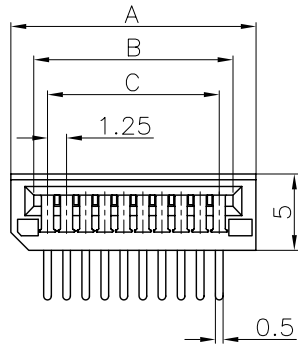
1. SERIES NUMBER	EFH91 : 1.25mm PITCH FPC CONN. RIGHT ANGLE, NON ZIF TYPE(LIF) SINGLE BEAM CONTACT
2. POSITION	04 ~ 40
3. CONTACT TYPE	2 : PHOSPHOR BRONZE
4. CONTACT PLATING	T : TIN
5. INSULATOR COLOR	1 : BLACK
6. INSULATOR MATERIAL	B : PBT C : NYLON © STANDARD=B
7. OPTION	0 : TOP CONTACT
8. PACKING	1 : TUBE
9. GREEN PRODUCT	BLANK : NOT GREEN PRODUCT R : RoHS COMPLIANT

WEKANG CO., LTD.
TEL:886-2-26436301 FAX:886-2-26432714

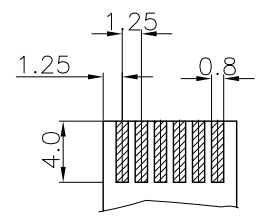
SIZE A4	UNIT mm	SCALE 2/1	SHEET 1 OF 1
---------	---------	-----------	--------------

GENERAL TOLERANCE X.X ±0.25 X.XX ±0.15 X.XXX ±0.05 ANGLE TOLERANCE ±1° RADIUS ±0.25 HOLE ±0.13	DRAWN. JEAN	DATE 02-23-2006	DRAWING NO. EFH91-XX2T1X01-R	C10021
	CHECKED. HENRY	DATE 02-27-2006	TITLE. 1.25mm PITCH FPC CONN. RIGHT ANGLE NON ZIF TYPE(LIF)TOP CONTACT	
	APPROVED. HENRY	DATE 02-27-2006	PART NO. EFH91-XX2T1X01-R	REV A.0

REV.	ECN.	DATE	DWN	APVD



PCB LAYOUT



T=0.3
APPLICABLE FPC/FFC

MATERIAL:

INSULATOR : TERMOPLASTIC, UL94V-0
 CONTACT : PHOSPHOR BRONZE
 CONTACT FINISH : TIN OVER NICKEL PLATED

SPECIFICATION:

CURRENT RATING : 1A
 DIELECTRIC WITHSTANDING VOLTAGE : 500V AC FOR 1 MINUTE
 INSULATION RESISTANCE : 1000MΩ MIN.
 CONTACT RESISTANCE : 30mΩ MAX.
 OPERATING TEMPERATURE : -40°C ~ +105°C.

POSITION	A	B	C	POSITION	A	B	C
4	8.55	6.41	3.75	23	32.30	30.16	27.50
5	9.80	7.66	5.00	24	33.55	31.41	28.75
6	11.05	8.91	6.25	25	34.80	32.66	30.00
7	12.30	10.16	7.50	26	36.05	33.91	31.25
8	13.55	11.41	8.75	27	37.30	35.16	32.50
9	14.80	12.66	10.00	28	38.55	36.41	33.75
10	16.05	13.91	11.25	29	39.80	37.66	35.00
11	17.30	15.16	12.50	30	41.05	38.91	36.25
12	18.55	16.41	13.75	31	42.30	40.16	37.50
13	19.80	17.66	15.00	32	43.55	41.41	38.75
14	21.05	18.91	16.25	33	44.80	42.66	40.00
15	22.30	20.16	17.50	34	46.05	43.91	41.25
16	23.55	21.41	18.75	35	47.30	45.16	42.50
17	24.80	22.66	20.00	36	48.55	46.41	43.75
18	26.05	23.91	21.25	37	49.80	47.66	45.00
19	27.30	25.16	22.50	38	51.05	48.91	46.25
20	28.55	26.41	23.75	39	52.30	50.16	47.50
21	29.80	27.66	25.00	40	53.55	51.41	48.75
22	31.05	28.91	26.25				

Order Information :

EFH 91 - 1 0 2 T 1 B 1 1 - R
 1 2 3 4 5 6 7 8 9

1. SERIES NUMBER	EFH91 : 1.25mm PITCH FPC CONN. RIGHT ANGLE, NON ZIF TYPE(LIF) SINGLE BEAM CONTACT
2. POSITION	04 ~ 40
3. CONTACT TYPE	2 : PHOSPHOR BRONZE
4. CONTACT PLATING	T : TIN
5. INSULATOR COLOR	1 : BLACK
6. INSULATOR MATERIAL	B : PBT C : NYLON © STANDARD=B
7. OPTION	1 : BOTTOM CONTACT
8. PACKING	1 : TUBE
9. GREEN PRODUCT	BLANK : NOT GREEN PRODUCT R : RoHS COMPLIANT

WEKANG CO., LTD.
 維鼎股份有限公司
 TEL:886-2-26436301 FAX:886-2-26432714

SIZE A4	UNIT mm	SCALE 2/1	SHEET 1 OF 1
---------	---------	-----------	--------------

GENERAL TOLERANCE
 X.X ±0.25
 X.XX ±0.15
 X.XXX ±0.05
 ANGLE TOLERANCE ±1°
 RADIUS ±0.25
 HOLE ±0.13

DRAWN.	JEAN	DATE	02 - 23 - 2006
CHECKED.	HENRY	DATE	02 - 27 - 2006
APPROVED.	HENRY	DATE	02 - 27 - 2006

DRAWING NO.	EFH91-XX2T1X11-R	C10021
TITLE.	1.25mm PITCH FPC CONN. RIGHT ANGLE NON ZIF TYPE(LIF) BOTTOM CONTACT	
PART NO.	EFH91-XX2T1X11-R	REV A.0